

Manufacturers, Distributors & Agents

Boats (Sail & Power), Motors and Trailers

This list of major manufacturers, distributors and agents was prepared by Computer Boat Values for your easy reference.

Each company was contacted during the fall of 2001 to verify information. Every attempt was made to verify the information and it is as accurate as those sources permit, but not guaranteed. Subject to change without notice.

Hull Identification Number

The Hull Identification Number (HIN) consists of 12 consecutive characters (capital letters of the alphabet or Arabic numerals) with no spaces, slashes, obliques or hyphens between them indicating:

- A three digit Manufacturer's Identification Code (MIC) followed by
- A five character manufacturer's hull serial number; and
- Four figures giving the date of manufacture

Manufacturer's Identification Code

The Manufacturer's Identification Code (MIC) consists of three characters (block capitals or numbers) forming the first three characters of the HIN, as issued by Coast Guard. It identifies the plant of manufacture, unique to the organization or organization to whom it is issued. See the Manufacturer's section of the Boat Value Book for a list of the companies names, addresses, phone numbers MIC etc.

Hull Serial Number

Characters four to eight of the HIN are the individual Hull Serial Number which is defined by the manufacturer. No two boats shall be assigned the same Hull Serial Number. The Hull Serial Number shall consist of capital letters of the alphabet or Arabic numerals or both, except that the letters “I”, “O”, and “Q” shall not be used.

Characters nine to twelve of the HIN are a letter and numbers indicating the month and year of manufacture and the model year for which the boat is built. The date code of the HIN has been handled three different ways over the years as indicated on the next three pages.

Country Code

The Country Code is an optional addition to the Hull Identification Number. Manufacturers of boats have the option of adding the prefix, e g “CA-” (block capitals and hyphen) in front of the HIN. This is a mandatory requirement for manufacturers exporting to some countries (for example: The European Community). This option is not part of the accepted mutual recognition of Hull Identification Numbers between Canada and the United States. Manufacturers exporting to the United States should check with US authorities on their acceptance of this fifteen digit Hull Identification Number before marking their products.

Marking of the Hull

The HIN is permanently affixed into the hull or hull member, or on a plate, such that removal of the HIN or plate would normally cause some scarring or damage to the surrounding hull area. No character of the HIN is to be less than 6 mm (1/4 in) in height and width The HIN shall be located:

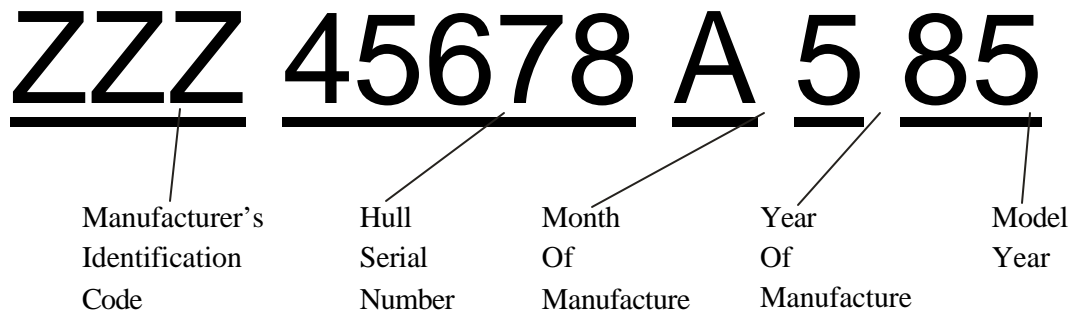
- The transom above the load waterline (preferably on the upper starboard quadrant);
- The starboard side at the aft end of the hull that bears the rudder or steering mechanism if the boat has no transom; or
- The outermost starboard side at the after end of the hull, if the boat has more than one hull and no transom.

Some manufacturers have added additional characters after the HIN separated from the HIN by a hyphen.

Three different numbering systems have been used by the Coast Guard and Boat Manufacturers. They are illustrated here in reverse order with the approximate dates of use above each.

Numbering System 1

Most builders started using this format in January 1985 and it is currently still in use today.



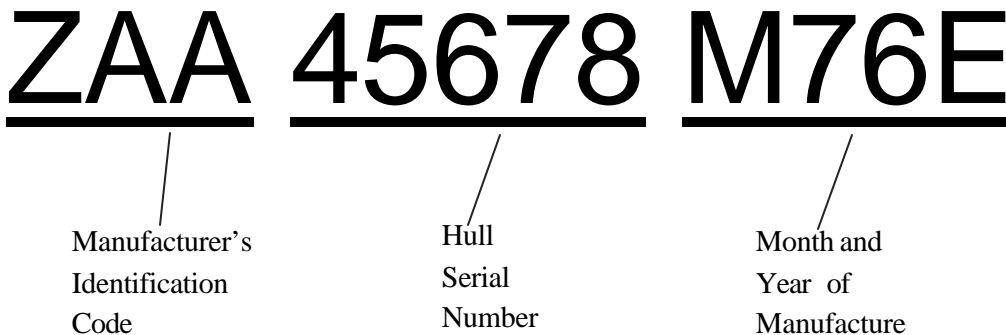
January	- A
February	- B
March	- C
April	- D
May	- E
June	- F
July	- G
August	- H
September	- I
October	- J
November	- K
December	- L

The example shows that Hull Number 456578 built by a manufacturer identified as ZZZ was built in January 1985, for model year 1985

- Character nine is a letter of the alphabet indicating the month during which construction or assembly began.
- Character ten is the last numeral of the year during which construction or assembly began.
- Characters eleven and twelve are the last two numerals of the model year for which the boat was built.

Numbering System 2

Most builders used this format from the mid 1970's until December 1984. Some still utilized the previous system.



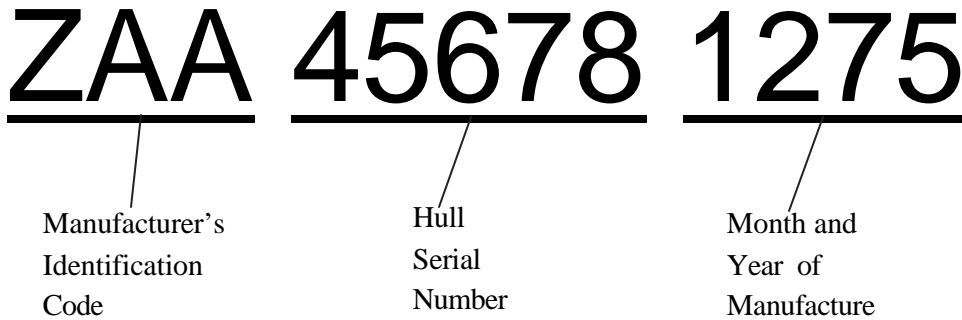
August	- A
September	- B
October	- C
November	- D
December	- E
January	- F
February	- G
March	- H
April	- I
May	- J
June	- K
July	- L

Using the "Model Year" option, the date of manufacture code for December 1975 would be displayed as "M76E"

- Character nine of the HIN is the letter "M" A spacer letter before the year.
- Characters ten and eleven are the last two numerals of the model year, which commences in August of the preceding calendar year.
- Character twelve is a letter of the alphabet indicating the month during which construction or assembly began.

Numbering System 3

Most builders used this format from the 1960's until the mid 1970's. Some converted to the newer system ahead of others.



- Characters nine and ten indicate the month of the calendar year (January to December numbered 01 to 12).
- Characters eleven and twelve are the last two numerals of the calendar year.
- The date of manufacture is the month and year during which the construction or assembly began.